

2-Wheel Flat Honing and Fine Grinding

Increased quantities – More performance – Series production – High productivity
User-friendliness – Precision and Safety



2-Wheel Flat Honing and Fine Grinding

Inspiration.

Nature is our model: Inspiration and standard for our endeavours towards innovation and perfection.

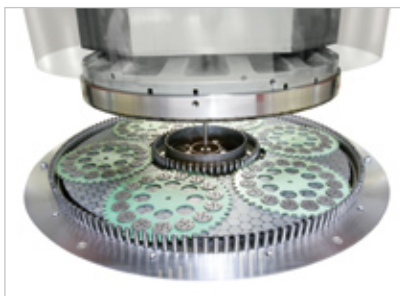


- Flow cooling system of the working wheels
- Quick loading and unloading thanks to the ingenious "Sandwich-System"
- Part or full automation easily interlinked to precision deburring systems or the like
- Process controlled machining
- Integrated computer-assisted measurement
- High availability
- Incidental analysis by machine control
- Remote maintenance / telediagnostic / online-support
- High precision non-contact in-process size measuring system

Increased quantities and series production with high stock removal require more performance. Our DLM 705 – 1205 range of machine is dedicated to high productivity, user-friendliness, economic efficiency, precision and safety.

Flat Honing with diamond or CBN-wheels or alternatively fine grinding with conventional SiC or corundum wheels – opt for a future in super finishing with a newly developed machine from the STÄHLI Group. Performance, sturdiness and quiet running for high stock removal stand for high precision and low piece cost. The technological advantages are well in evidence:

- Mineral cast structure guarantees top thermal and mechanical endurance
- Energy-efficient
- Short changeover time



Technical data

	DLM 705	DLM 1005	DLM 1205
Working wheel diameter, external	500-720 mm	800-1220 mm	1020-1225 mm
Number of carriers	4-7		
Height range between working wheels	<390 mm		
Working load continuously variable	0-2000 (4000) daN	0-3500 (6000) daN	0-4000 (8000) daN
PC-operating control	programmable control		
Switch off precision	0.1 my		
Cooling of working wheel	yes		

Speed range, upper and lower wheel, continuously

Flat honing and fine grinding	0-250, 400, 600 min ⁻¹	0-210, 320 min ⁻¹	0-210, 300 min ⁻¹
Center drive	0-125, 220 min ⁻¹	0-150 min ⁻¹	0-100 min ⁻¹
Direction of rotation for all drives	programmable control		

Power ratings

Total driving power	3x400-480 Volt 50/60 Hz	3x400-480 Volt 50/60 Hz	3x400-480 Volt 50/60 Hz
Dimension W x D x H	ca. 3300 x	ca. 4000 x	ca. 4000 x
B x T x H	1970 x 2600 mm	2700 x 2900 mm	2700 x 2900 mm
Weights	ca. 7800 kg	ca. 12500 kg	ca. 13000 kg

Options

Semi or full automation robot loading, interlink	yes
Interlink to precision deburring systems	yes

We are one of the leading companies worldwide in the manufacture of flat honing, lapping and polishing machines. At our customers we are known just as much by our standard products as by custom-made and need-oriented special products. This

special know-how results from decades of experience from daily new assignments in contract work and the support of our expert and committed workforce. We are happy to pass on our know-how to our customers within the framework of contract

work, tests and complex or experimental project studies. Put to the test our reliability and innovative dynamism.

Further information may be obtained from the addresses listed or from our homepage.

Consultation and Sales, Machining and Testing centres

Switzerland

STÄHLI Lapping Technology Ltd
Sägestrasse 10
CH-2542 Pieterlen/Biel
Phone +41 32 376 05 00
Fax +41 32 376 05 09
LTP@stahli.com

STÄHLI Lapping Technology Ltd
Zürcherstrasse 262
CH-8406 Winterthur
Phone +41 52 203 50 51
Fax +41 52 203 21 40
LTW@stahli.com

Germany

STÄHLI Läpp-Technik GmbH
Max-Brose-Strasse 3
DE-771093 Weil i.S./Stuttgart
Phone +49 7031 75 779 6
Fax +49 7031 75 779 80
LTS@stahli.com

North America

STAHLI USA, Inc.
Midwest Headquarters
505 Oakwood, Suite 180
US-Lake Zurich IL, 60047
Phone +1 847 719 0360
Fax +1 847 719 0361
LTUS@stahli.com

www.stahli.com